

Transforming learning for student success

A good college with outstanding capacity to improve



2008 Ofsted report on the College of North East London: a summary of the findings

“CONEL offers a highly responsive curriculum that fully meets the priorities and needs of employers and the local community. Guidance and support arrangements for learners are excellent. Social, as well as educational, inclusion is outstanding. The college is an active participant or leader in many community projects to build social cohesion.

Leadership, management and governance are outstanding. As well as raising standards, CONEL has successfully developed a culture of mutual respect where diversity is valued and learners from different backgrounds enjoy studying together in a safe and welcoming environment. The large majority of students are successful. They acquire appropriate skills and knowledge, gain qualifications and progress on to employment, promotion or further study.”

Journey to success: transforming learning

Inspection is an opportunity for us to measure our progress, evaluate how much we have achieved and identify the areas where we need to improve further. CONEL is on a programme of continuous improvement and Ofsted's inspectors recognised the results.

CONEL's capacity to improve: outstanding

"The college demonstrates outstanding capacity to improve. Strong leadership and very effective management have led to significant progress in all aspects

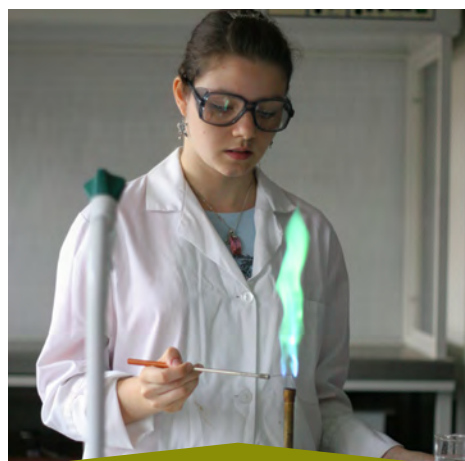
of the college's work. Senior managers and governors have clear plans for the future strategic direction of the college. Students' achievements show a sustained trend of improvement. The quality of educational and training provision is much better than at the time of the last inspection. Quality assurance procedures are rigorous and the self-assessment report is largely accurate. All recruitment targets have been met and very effective financial management has kept the college in strong financial health."

Achievement and standards: good

"Achievement and standards on apprenticeship programmes and Train to Gain are good ... Train to Gain learners are using their improved literacy and numeracy skills very effectively within their jobs and progressing to further courses or gaining promotion."

"Learners have a very positive attitude to their studies and treat each other with respect."

What the inspectors said...



Science and mathematics Satisfactory

"Achievement and standards in science and mathematics are satisfactory. Success rates on certificate in science, level 2 numeracy and AS mathematics courses were high in 2006/07. Success rates on most other courses are around the recent national average. Students on AS and A2 courses make the progress expected of them in science, taking into account their prior attainment. In mathematics at this level, they make good progress..."



Information and communication technology Good

"Achievement and standards are good. Success rates on most courses are high and above the recent national average. Retention on part-time adult courses is high. The standard of practical skills is good. Learners demonstrate confidence in a range of software applications. Last year, one learner won a gold medal award at the UK 'Skills Challenge'. Learners' behaviour and enthusiasm are good..."



Business Satisfactory

"Achievement and standards are good. Success rates are high on NVQ accounting and trade union studies programmes. Those on trade union studies courses achieve exceptionally well across a wide range of specialist qualifications, with success rates usually at or above 98%. Students on level 3 programmes in business perform well. Retention and success rates for adult learners are higher than those for younger students..."

Quality of provision: good

“Teaching and learning are good. The college’s strategy to ‘transform learning’ has successfully blended aspects of staff development, coaching and mentoring to help teachers improve their practice.”

“CONEL is highly responsive to employers’ needs and is successful in leading a Train to Gain consortium. Links with employers are strong, productive and well established ...The college provided particularly good equality and diversity training for the staff of one large employer and, in doing so, had a very real

impact on changing attitudes to discrimination.”

“Educational and social inclusion is outstanding.”

Leadership and management: outstanding

“The clear direction provided by the principal and senior management team, coupled with effective planning and action, has led to sustained improvements. The college has benefited from the experience and skills of its outstanding governing body.”

“Financial management is exemplary...”

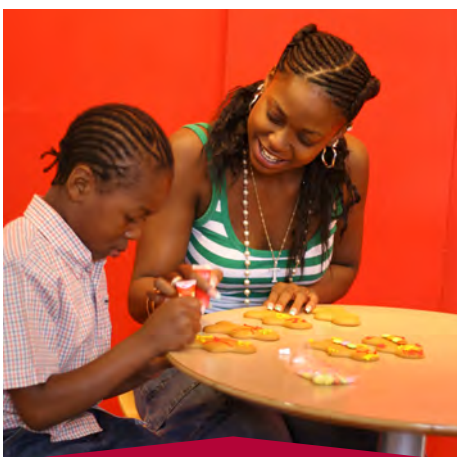
“Staff and governors place a strong emphasis on responding to the views of learners...”

“The college’s procedures for ensuring equality of opportunity are outstanding. It has clear policies covering racial equality, disability and gender. Groups of learners from minority ethnic backgrounds perform well compared to those in similar colleges. The ethnic profile of the governing body, and staff at all levels, closely matches that of the local community... All areas of the college are fully accessible to those with physical disabilities.”



Arts and media Good

“Success rates have improved consistently in the last three years and are now good overall at 79%, above the recent national average. Success rates have improved more for adults than for those aged 16-18... Learners enjoy their work and are confident, in most cases, to discuss it with staff and fellow students. They participate well in group discussions and critiques.”



Health and care Outstanding

“Achievement and standards are outstanding. Success rates are well above the recent national average and on many courses are consistently high... Learners’ knowledge and understanding of theory and professional practice are very good. Learners demonstrate excellent awareness of the needs of different client groups. Employers provide very positive feedback on the high standards achieved by their employees... Students enjoy their learning and are very motivated to succeed.”

CONEL’s key strengths

The inspectors found

- Very high success rates for almost all groups of learners
- Very productive strategic partnerships with employers and other organisations
- A vocational curriculum that is highly responsive to local needs
- Excellent support and guidance
- Outstanding educational and social inclusion
- Strong leadership leading to sustained improvement in success rates over a three-year period

Areas for improvement

- The significant proportion of teaching that remains no better than satisfactory
- Attendance and punctuality
- The use of information and learning technology (ILT) to enhance learning

Cutting edge facilities, 92% achievement



CONEL's students come from Haringey, Hackney, Enfield and other neighbouring boroughs. It has approximately 1000 staff, around 15,000 students enrol annually and more than 200 courses run every year at all levels.

Activities cover ten sector subject areas, with a strong focus on vocational specialisms. CONEL is dedicated to giving the best possible education and training to all its learners, no matter what they have achieved before. Students have access to excellent teaching and first-class facilities.

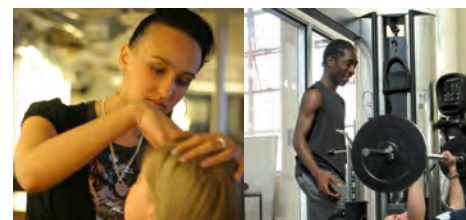
A 92% achievement rate (2006-07) places CONEL in the top ten per cent of colleges in England.

Summary of grades awarded

Effectiveness of provision	Good: Grade 2
Capacity to improve	Outstanding: Grade 1
Achievement and standards	Good: Grade 2
Quality of provision	Good: Grade 2
Leadership and management	Outstanding: Grade 1
Equality of opportunity	Outstanding: Contributory Grade 1

Sector subject areas

Health and care	Outstanding: Grade 1
Science and mathematics	Satisfactory: Grade 3
Information and communication technology	Good: Grade 2
Arts and media	Good: Grade 2
Business	Satisfactory: Grade 3



Links with employers

- The College has increasingly strong links with employers. It is constantly developing its work-based learning offerings in partnership with employers, trade unions and local authorities.
- CONEL leads the North London Train to Gain Consortium. This national scheme aims to help businesses to improve their employees' skills.
- Train to Gain is free as long as employees meet the criteria.
- It is particularly aimed at staff working in small to medium sized businesses and who have yet to achieve NVQ Level 2.

For further information:

Course Information
020 8442 3055
Telephone 020 8802 3111
Facsimile 020 8442 3091
Minicom 020 8809 0795

Employment Training Solutions
(including Train to Gain)
0800 678 3000

Ofsted inspected CONEL during May 2008. The report was published by Ofsted in July 2008 and is available on the Ofsted website where it can be downloaded: www.ofsted.gov.uk

The report is also available via the CONEL website: www.conel.ac.uk under About us > Corporate Documents